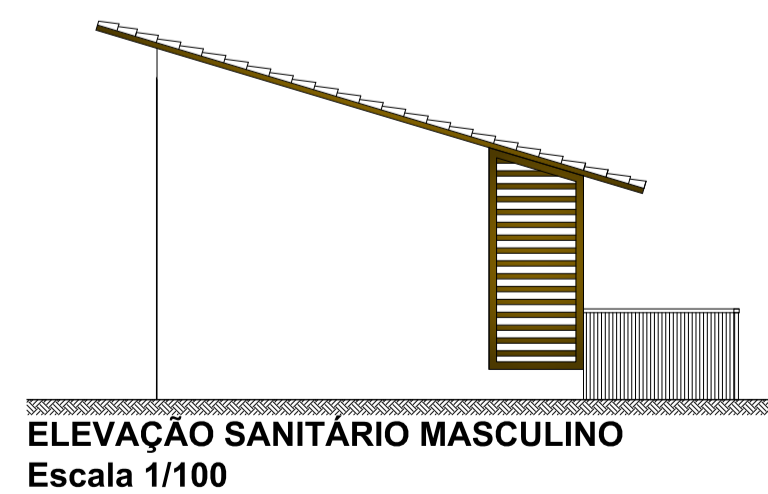
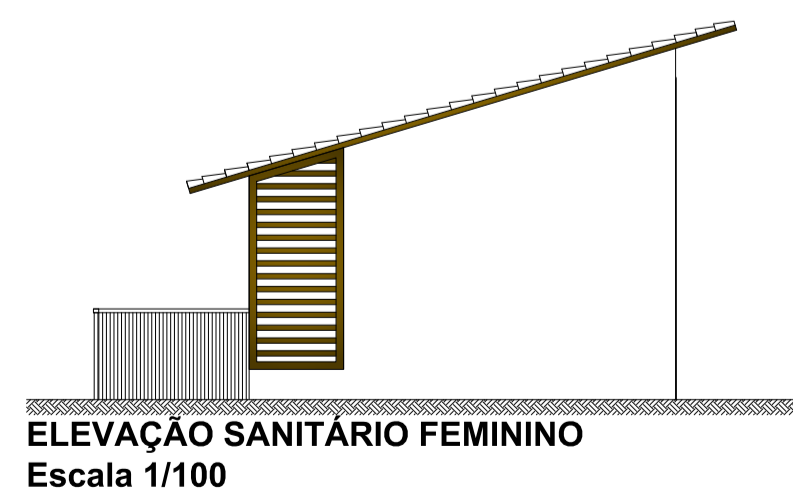
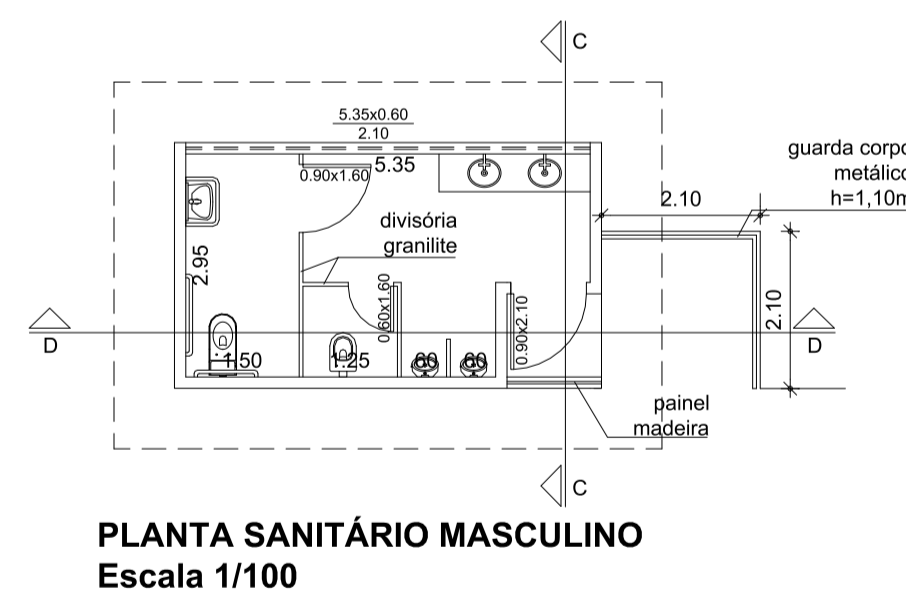
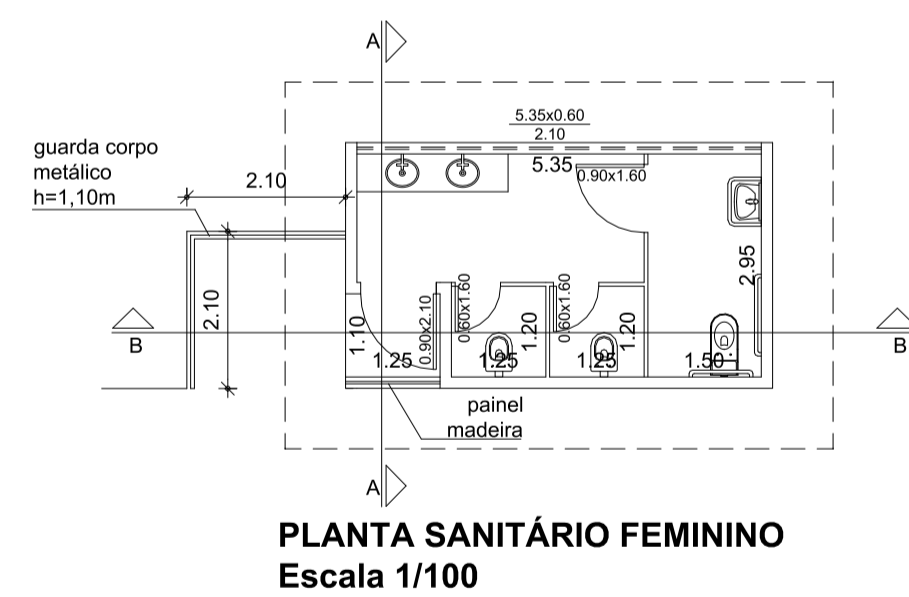
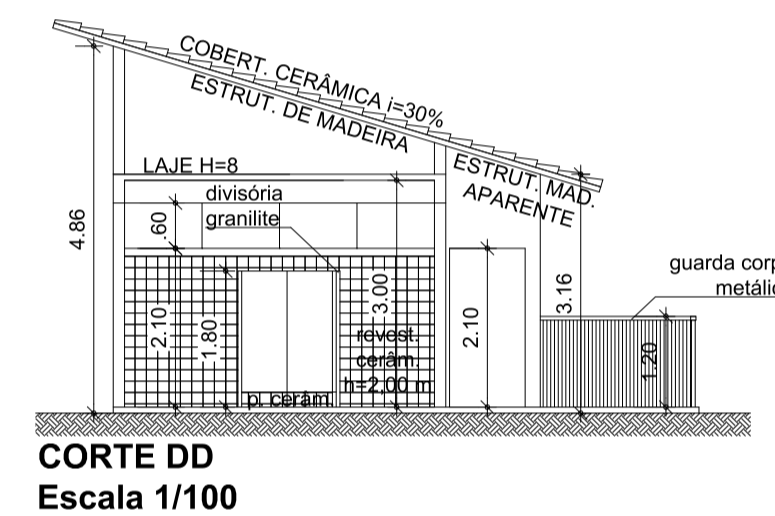
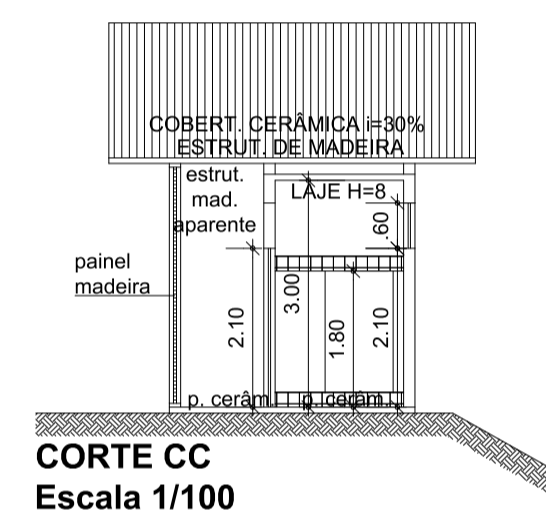
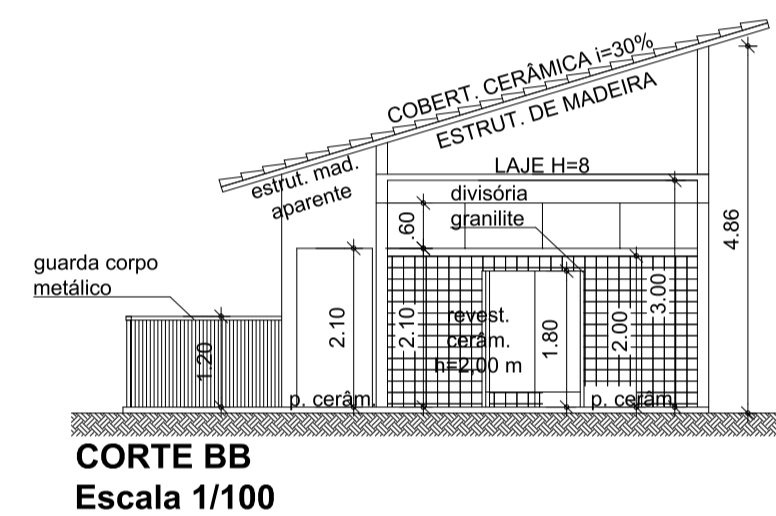
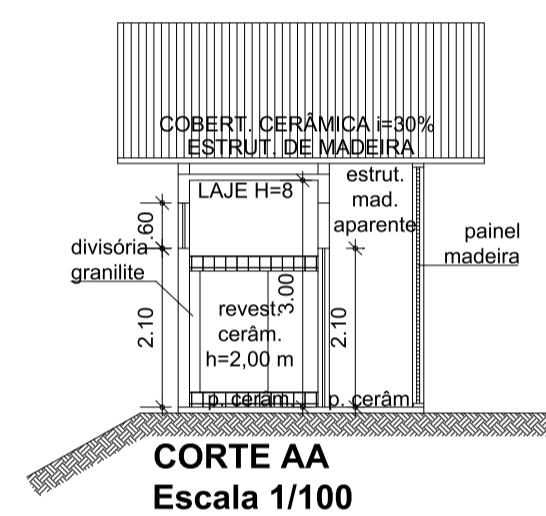


IMPLANTAÇÃO
Escala 1/200



PROJETO BÁSICO

F
U

CONSTRUÇÃO DE SANITÁRIOS

Objeto do convênio:

PREFEITURA DO MUNICÍPIO DE TIETÊ

Proprietário:

AVENIDA FERNANDO COSTA

Local:

TIETÊ - SP

Cidade - Estado

VIDE PROJETO

Escala:

Situação S/ Escala

Quadro de Áreas

Sanitário Feminino: A = 18,36 m²

Sanitário Masculino: A = 18,36 m²

Total a construir: A = 36,72 m²

Proprietário
Prefeitura do município de Tietê
Vlamir de Jesus Sandei
Prefeitura Municipal

Secretaria de Obras e Planejamento
Engº Álvaro Floriam Gebraiel Bellaz
CREA: 5070112805

Janeiro/2022