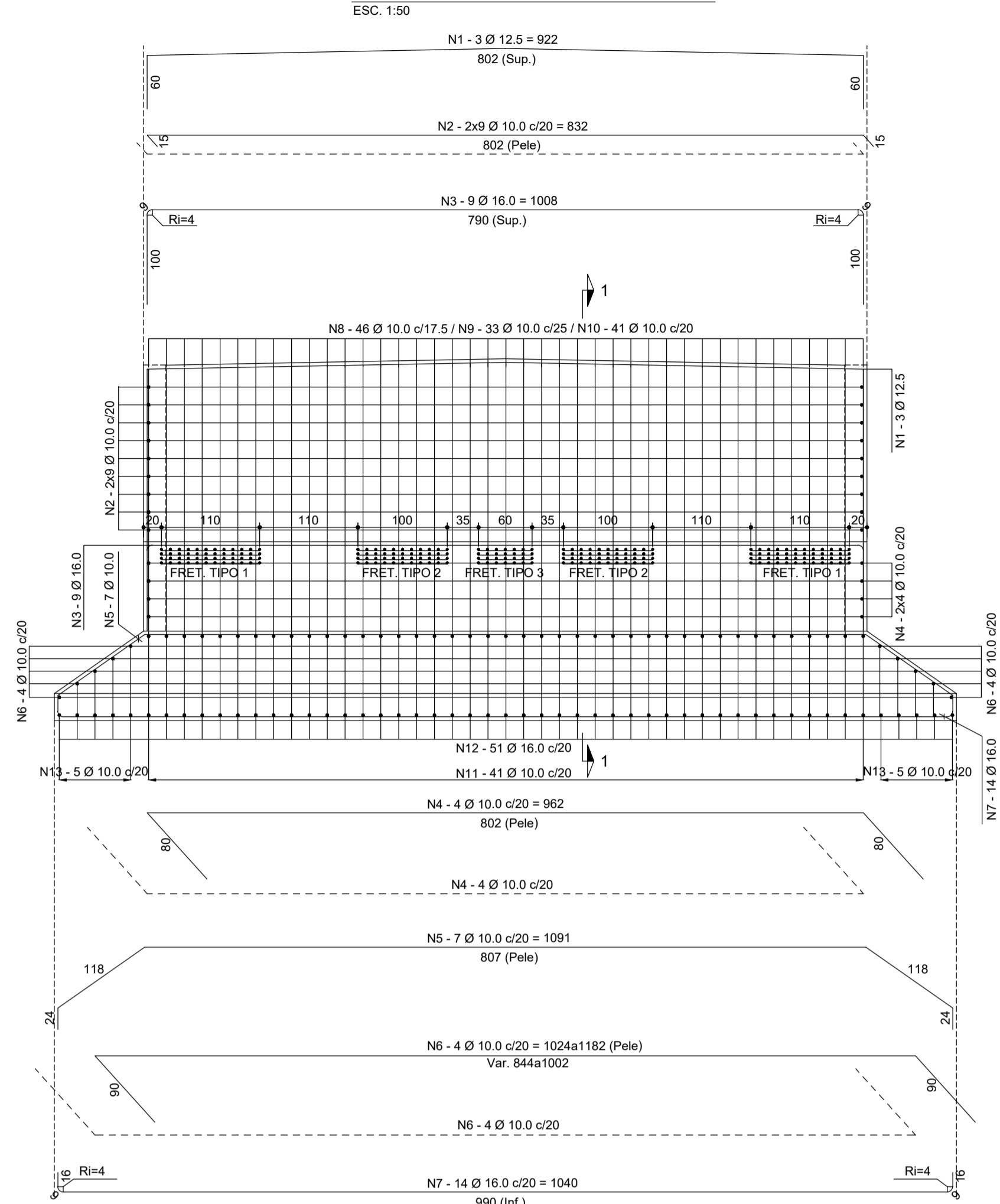
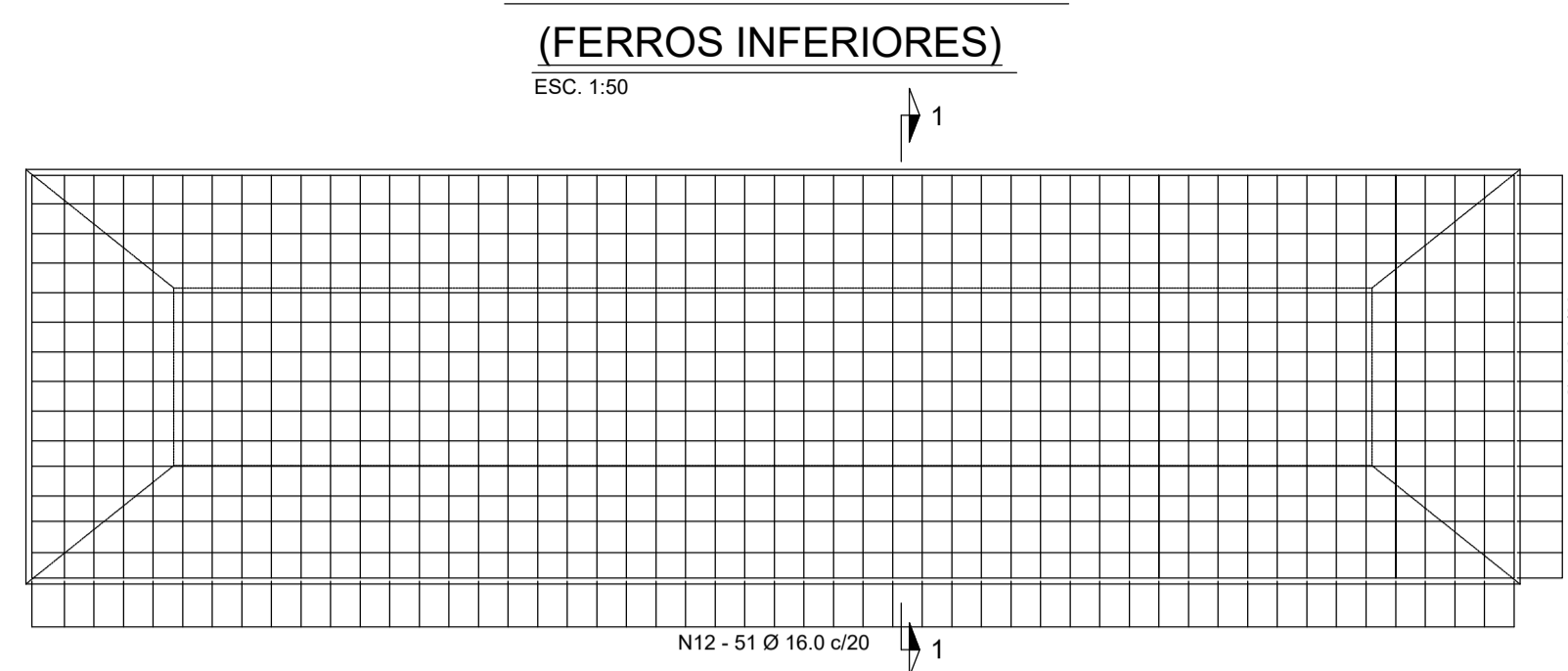


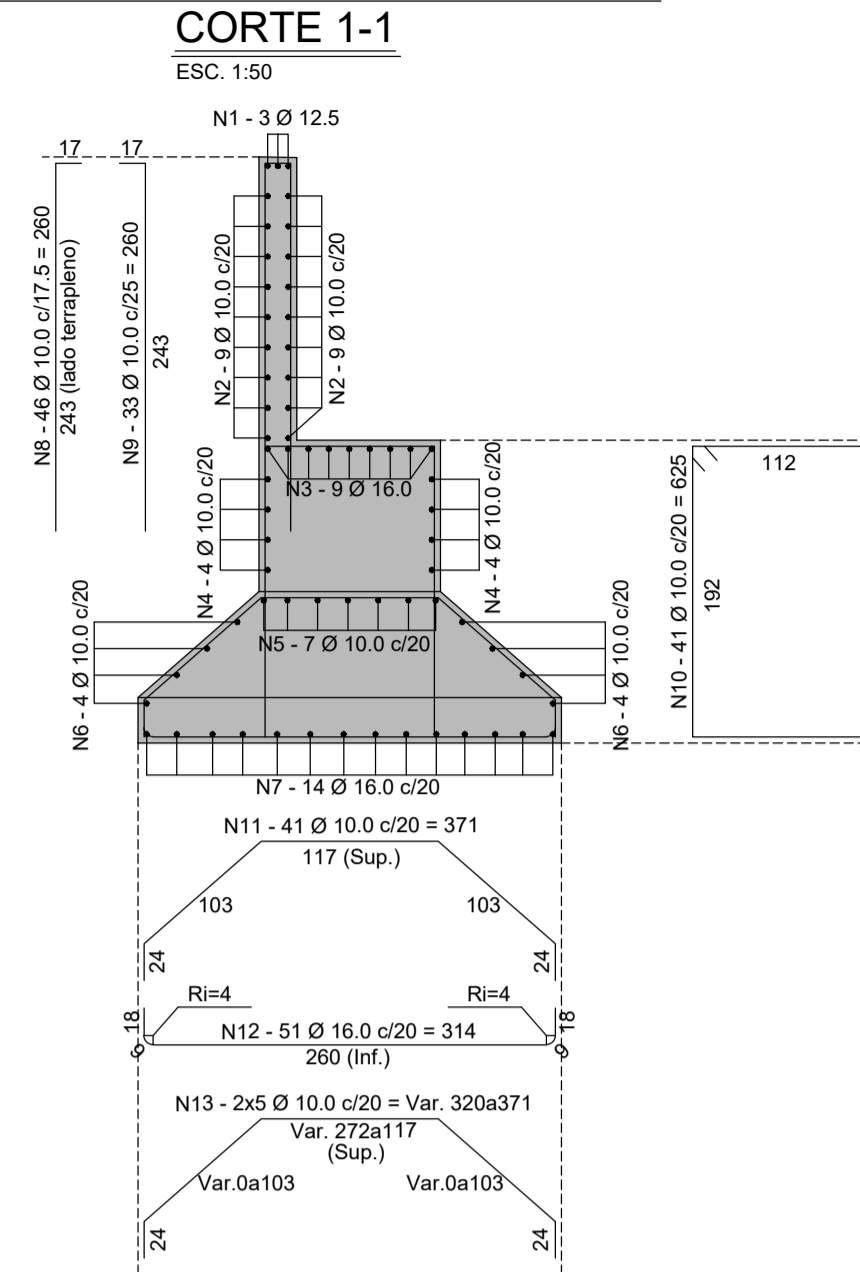
VISTA DOS ENCONTROS (2x)



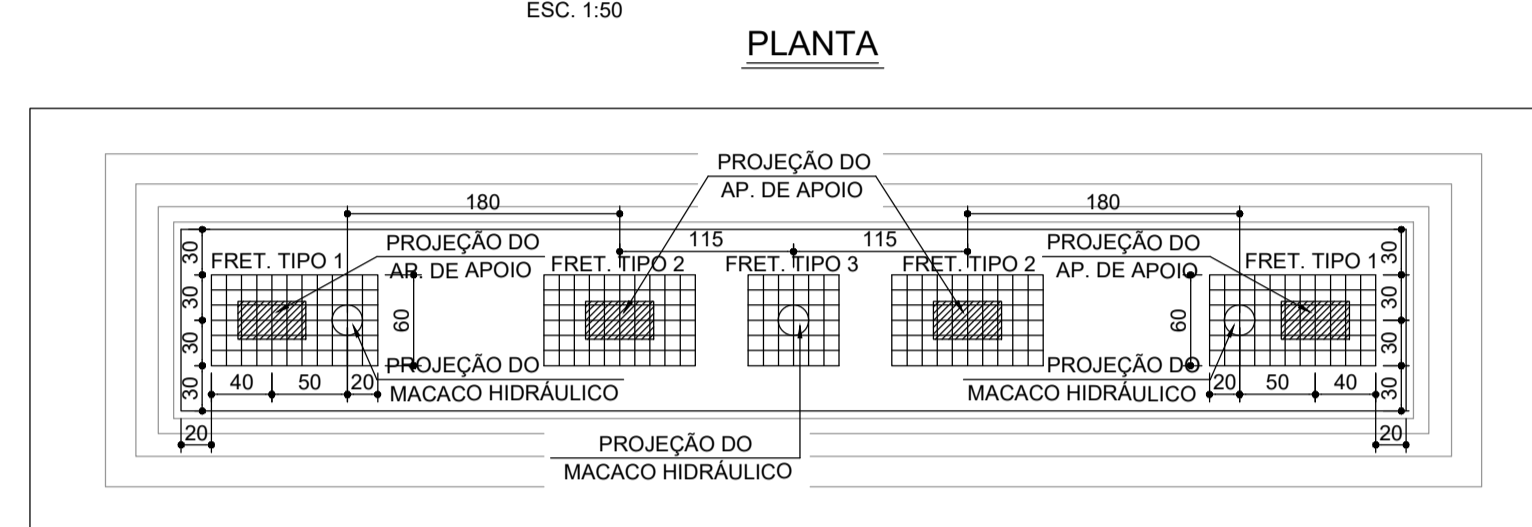
PLANTA DAS SAPATAS (2x)



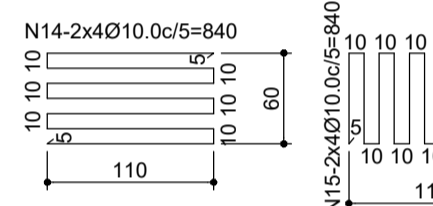
TRANSVERSAL DOS ENCONTROS



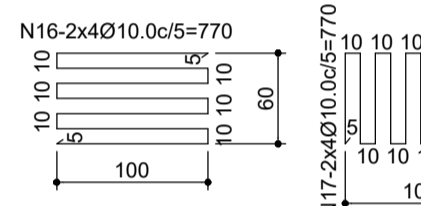
FRETAGEM DA TRAVESSA (2x)



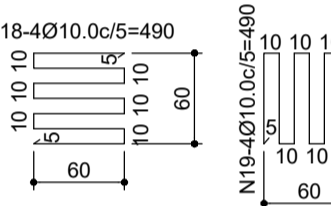
FRETAGEM TIPO 1



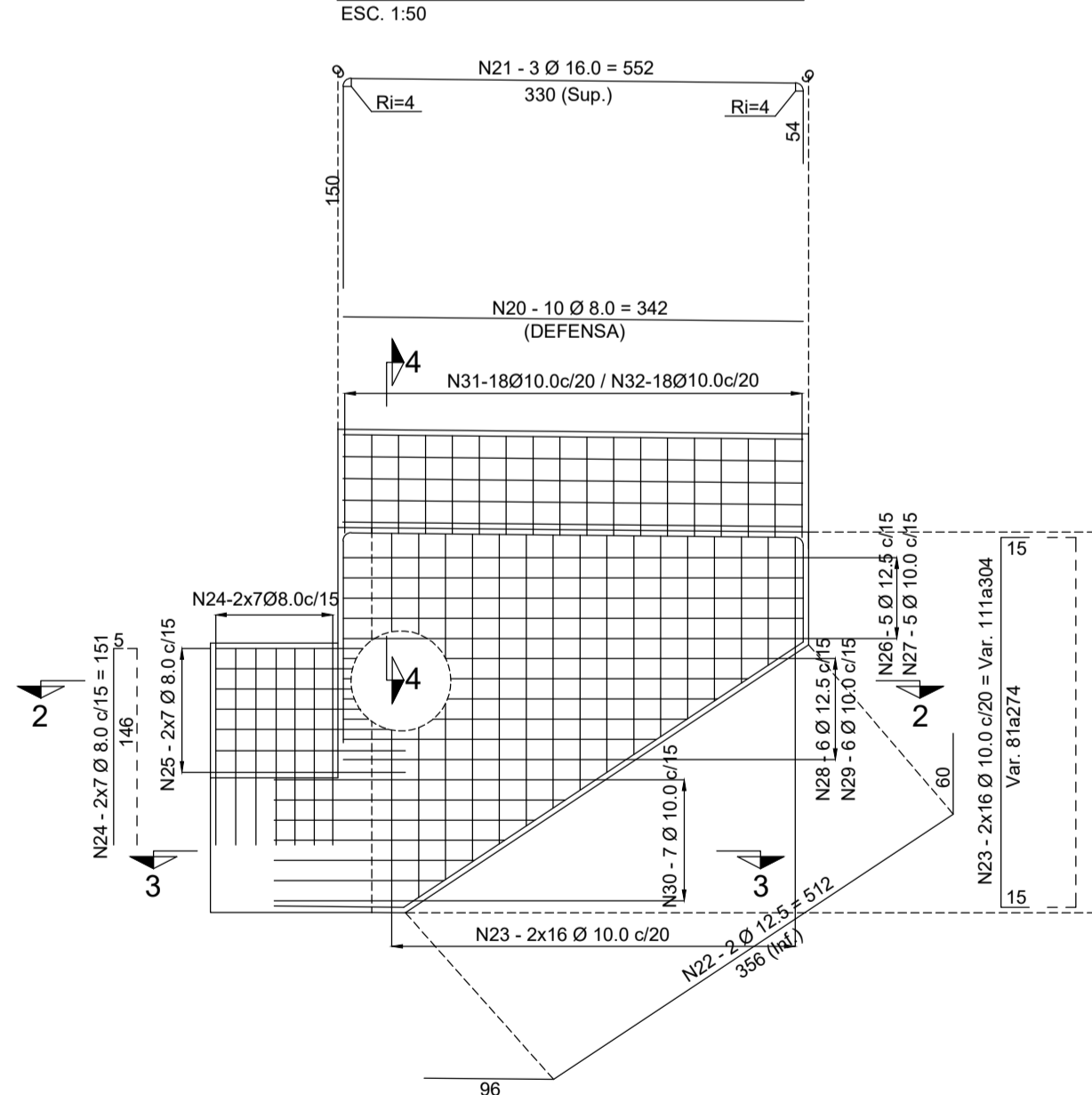
FRETAGEM TIPO 2



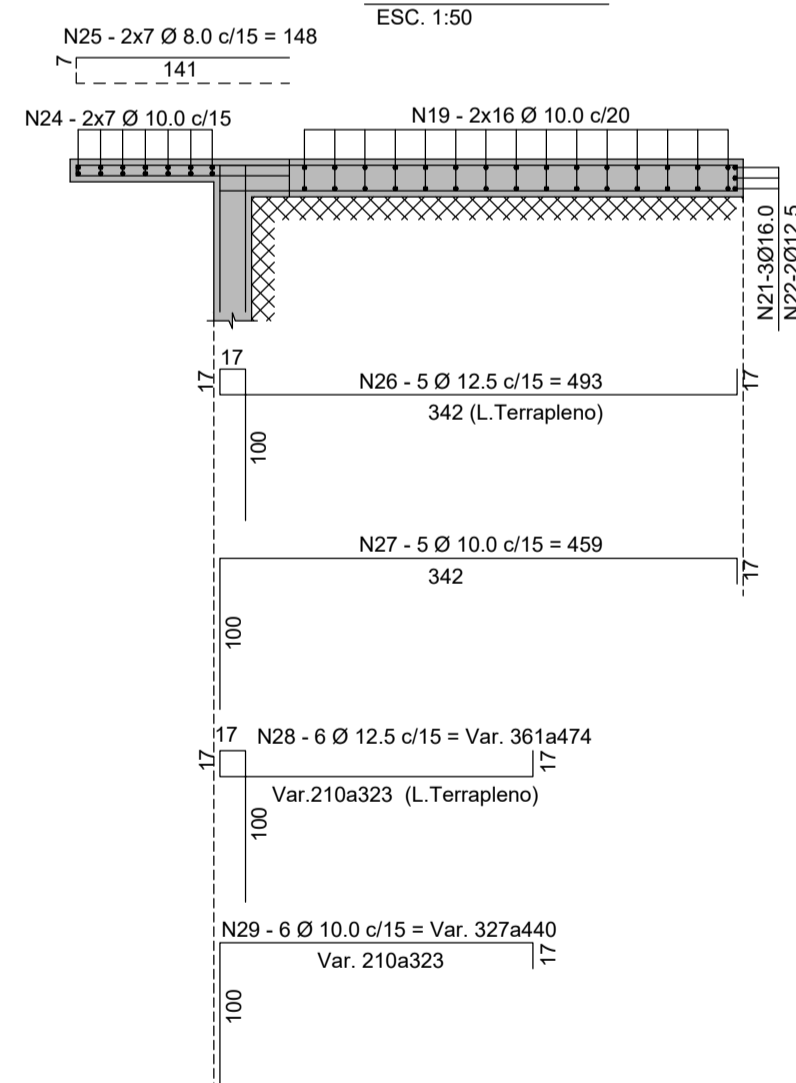
FRETAGEM TIPO 3



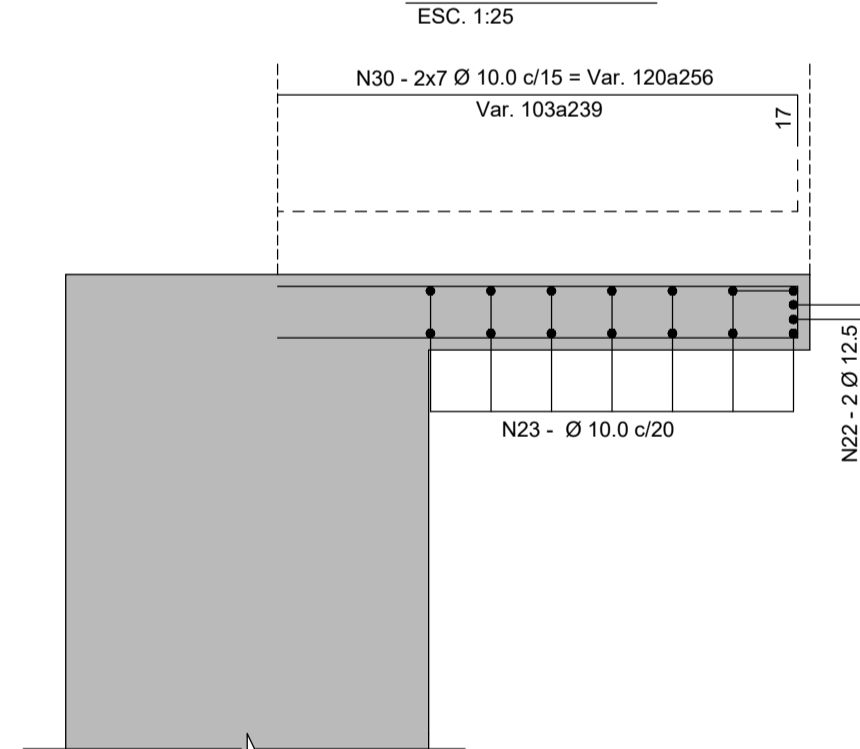
ARMAÇÃO DAS ALAS (4x)



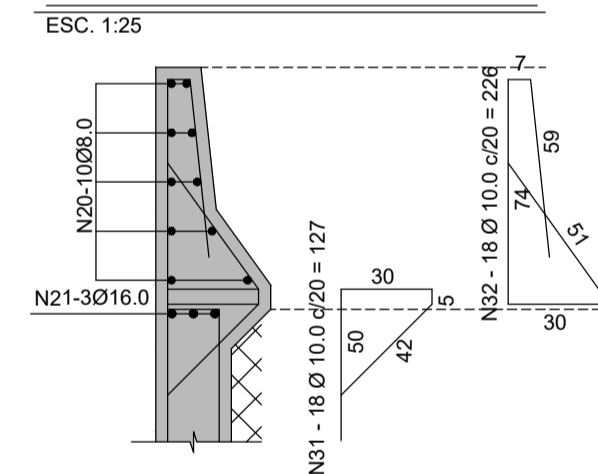
CORTE 2-2



CORTE 3-3



CORTE 4-4



LISTA DE FERROS					
N	Ø	Quant.	Comprimentos		total
			unit	total	
1	12,5	6	922		55,32
2	10,0	36	832		299,52
3	16,0	18	1008		181,44
4	10,0	16	962		153,92
5	10,0	14	1091		152,74
6	10,0	14	Var.		176,48
7	16,0	28	1040		291,20
8	10,0	92	260		239,20
9	10,0	66	260		171,60
10	10,0	62	625		512,50
11	10,0	82	371		304,22
12	16,0	102	314		320,28
13	10,0	20	Var.		69,10
14	10,0	16	840		134,40
15	10,0	16	840		134,40
16	10,0	16	770		123,20
17	10,0	16	770		123,20
18	10,0	8	490		39,20
19	10,0	8	490		39,20
20	8,0	40	342		136,80
21	16,0	12	552		66,24
22	12,5	8	512		40,96
23	10,0	128	Var.		265,60
24	8,0	56	151		84,56
25	8,0	56	148		82,88
26	12,5	20	493		98,60
27	10,0	20	459		91,80
28	12,5	24	Var.		100,20
29	10,0	24	Var.		92,04
30	10,0	56	Var.		105,28
31	10,0	72	127		91,44
32	10,0	72	226		162,72

RESUMO CA-60		
Ø	COMPR (m)	PESO (kg)
6,3	—	—
8,0	304,24	122
10,0	3481,76	2194
12,5	235,08	295
16,0	889,16	1375
20,0	—	—
25,0	—	—
Total		3985

Notas:

- 1 - Concreto estrutural Super : Meso e Infra : fck > 25 MPa. Defensas: fck > 25 MPa.
- 2 - Cobrimento das armaduras : Meso e Infra = 4,0cm
- 3 - Ver notas gerais na FL.02.
- 4 - Prever alargamento da estrutura

n°	Data	Revisão



Projeto
PROJETO EXECUTIVO ESTRUTURAL DA PONTE JOSE CITRONI SA
Cliente
P.M. TIETÉ
Local
BAIRRO MANDISSUNUNGA - TIETÉ - SP
Assunto
Escala
Indi

ARMAÇÃO DOS ENCONTROS

Proj. Cristian Assali
Des. Rodrigo Allan
Verif. RODOLFO
Aprov.
Proj. n°

05